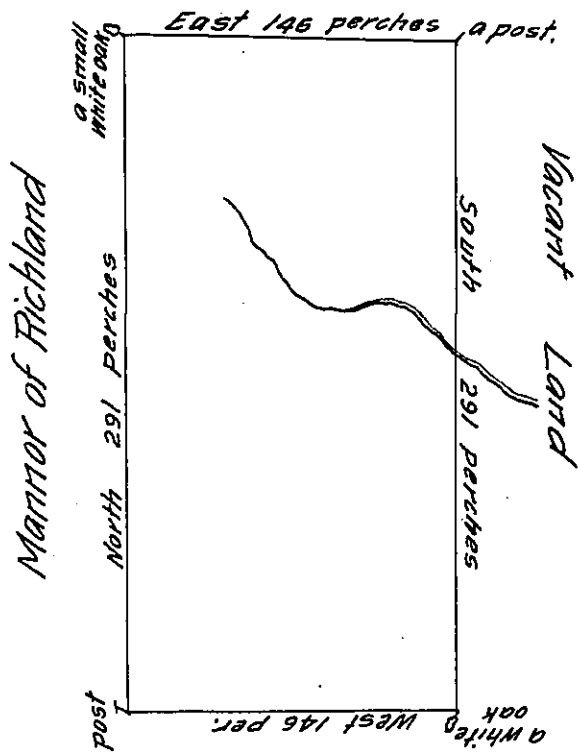


Vacant Land



James Logan's Land

A Draught of a Tract of Land situate in the Great Swamp in the County of Bucks containing 250 acres and allowance of 6<sup>th</sup> Cent. for Roads &c. Surveyed to William Allen Esq<sup>r</sup> on the 9<sup>th</sup> day of 9ber 1736. In part of 5000<sup>ac</sup> granted by Warrant from the Proprietaries (dated at London the 8<sup>th</sup> day of May 1732.) To Thomas Penn Esq<sup>r</sup> one of the said Proprietaries whose right the aforesaid William Allen hath purchased

Benja. Eastburn Surv<sup>r</sup> Gen<sup>l</sup>

Patent to be made to Samuel Wilkins. —

IN TESTIMONY that the above is a copy of the original remaining on file in the Department of Internal Affairs of Pennsylvania, made conformably to an Act of Assembly approved the 16th day of February, 1833, I have hereunto set my Hand and caused the Seal of said Department to be affixed at Harrisburg, this Sixth day of January 1911.

Henry Houck  
Secretary of Internal Affairs.